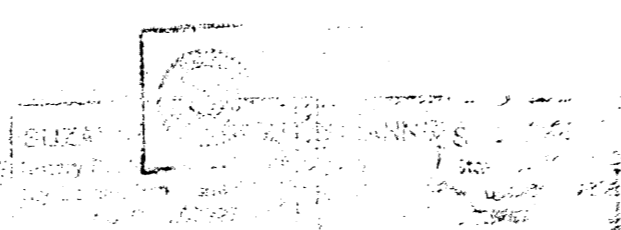
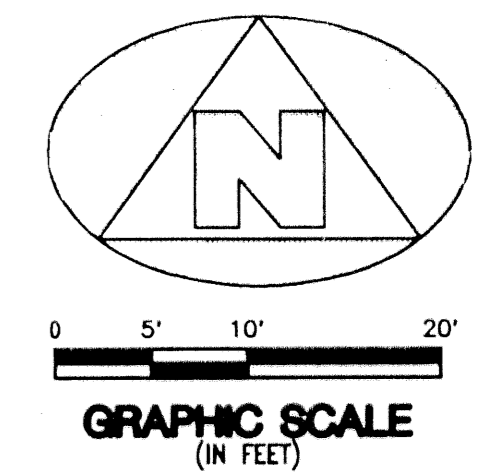
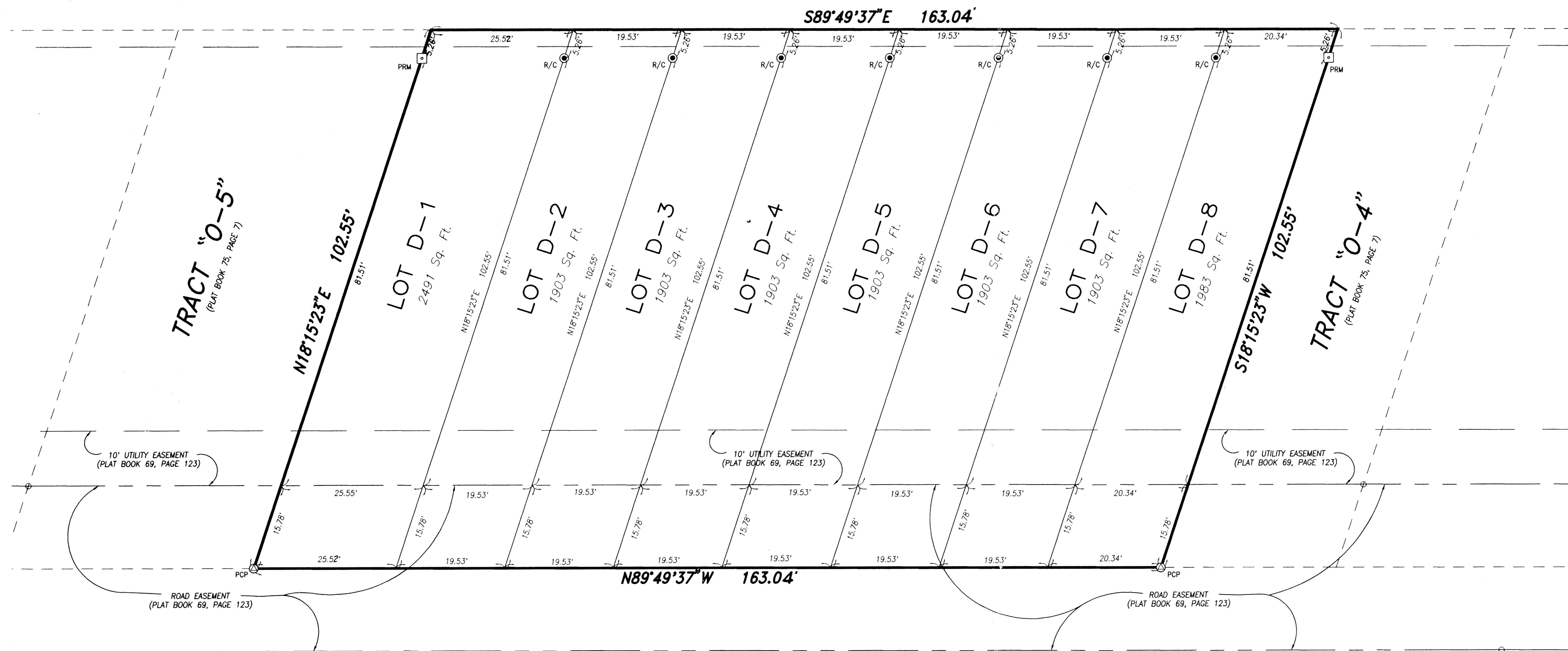


SEAVIEW AT JUNO BEACH RE-PLAT OF LOTS D-1 THROUGH D-8

59

LYING IN SECTION 21, TOWNSHIP 41 SOUTH, RANGE 43 EAST, TOWN OF JUNO BEACH, AND BEING A RE-PLAT OF LOTS D-1 THROUGH D-8, INCLUSIVE, SEAVIEW AT JUNO BEACH PARTIAL RE-PLAT, AS RECORDED IN PLAT BOOK 75, PAGE 7, TOWN OF JUNO BEACH, PALM BEACH COUNTY, FLORIDA

JUNO BEACH PARK (UNPLATTED)



- SURVEYOR'S NOTES AND LEGEND:**
- BEARINGS SHOWN OR STATED HEREON, ARE BASED ON, OR ARE RELATIVE TO THE BEARING OF SOUTH 89°49'37" EAST, ALONG THE SOUTH LINE OF THE PLAT OF SEAVIEW AT JUNO BEACH PARTIAL RE-PLAT AS RECORDED IN PLAT BOOK 69, PAGE 123.
 - IN THOSE INSTANCES WHERE UTILITY/DRAINAGE STRUCTURES ARE CONSTRUCTED IN CONJUNCTION WITH THE PLATTED PERMANENT CONTROL POINTS (P.C.P.) POSITION—STRADDLERS MONUMENTED AS PERMANENT CONTROL POINTS WILL BE SET TO REFERENCE THE PLATTED P.C.P. POSITION.
 - LINES WHICH INTERSECT CURVES ARE NOT RADIAL, UNLESS OTHERWISE NOTED.
 - C/L DENOTES A CENTERLINE
 - PRM DENOTES A SET #2424 PERMANENT REFERENCE MONUMENT (P.R.M.)
 - PCP DENOTES A SET #2424 PERMANENT CONTROL POINT (P.C.P.)
 - IRC DENOTES A SET #2424 IRON ROD AND CAP
 - N=860909.29 DENOTES NORTHING STATE PLANE GRID COORDINATE
 - E=948322.77 DENOTES EASTING STATE PLANE GRID COORDINATE

This instrument was prepared by Wm. R. Van Campen, R.L.S., in and for the offices of Bench Mark Land Surveying & Mapping, Inc., 4152 West Blue Heron Boulevard, Suite 121, Riviera Beach, Florida

BENCH MARK
Land Surveying and Mapping, Inc.
4152 West Blue Heron Blvd., Suite 121, Riviera Beach, FL 33404
Fax (407) 844-9659 Phone (407) 848-2102

RECORD PLAT
SEAVIEW AT JUNO BEACH RE-PLAT
OF LOTS D-1 THROUGH D-8

DWN	DJM	FB	DATE 02/01/96	WO.# P55
CKD	FILE P55-D.dwg	SCALE 1" = 20'	SHEET 2 OF 2	

SUBDIVISION SEAVIEW AT JUNO BEACH
 BOOK 77 PAGE 59 FLOOD MAP #
 QUAD # ZONING
 SE ZIP CODE
 PUB NAME TOWN OF JUNO BEACH

TAX 63